

# KACHEMAK BAY RESEARCH RESERVE

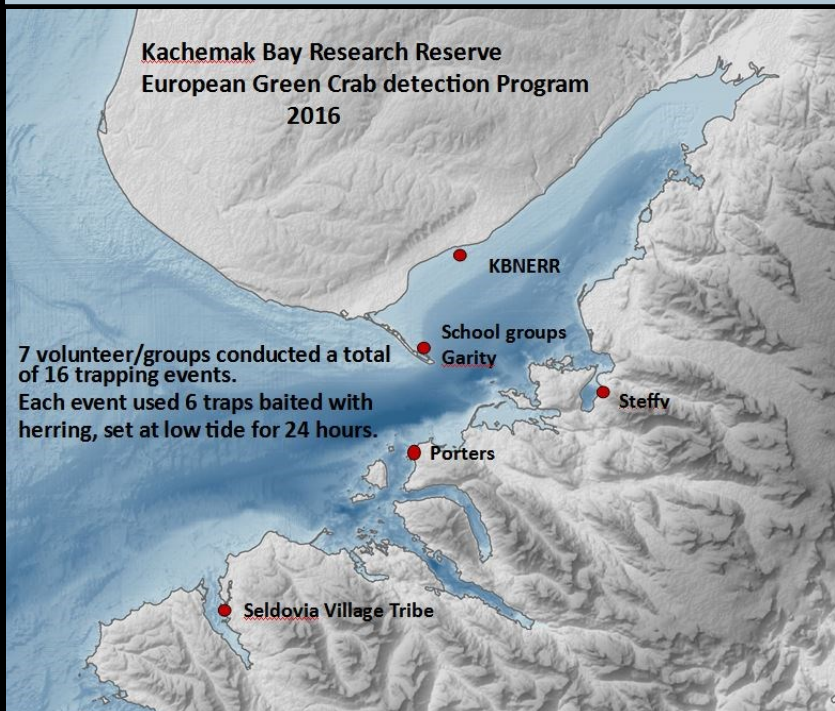
## European Green Crab Monitoring

### 2016 Progress Report

**Early Detection** European green crab (EGC) monitoring in Kachemak Bay has been underway for 11 years to detect invasive EGC, should they arrive.

**This year we had 7 volunteers/groups who conducted a total of 16 trapping events. Thank you so much for your effort and dedication to this project!**

No EGC have been found in Alaska to date.

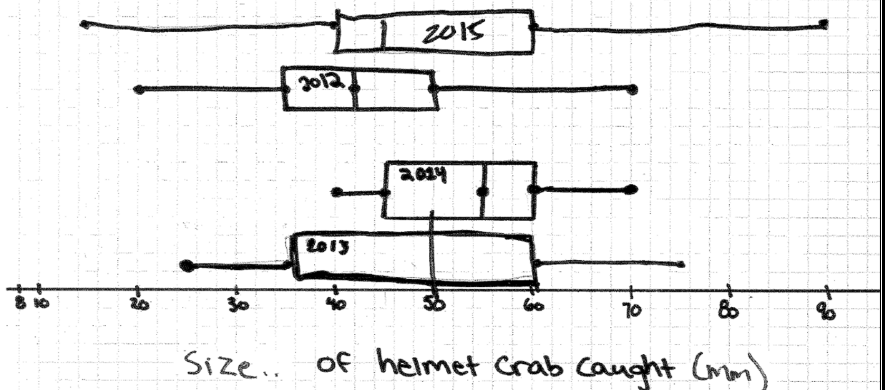


### European Green Crab Found in new waters of Washington State

In the same week, but in two separate areas, European Green Crabs were spotted in Puget Sound, Washington. Although the invasive crab have been found further up the West Coast, they had not yet been detected in this large body of inland waters. Washington Sea Grant is the lead in a multi-agency effort to survey the area and estimate the extent of the invasion. We can only hope that the population is not too established. Although Padilla Bay NERR does not have a monitoring program, they did find one of the crabs!

### McNeil Canyon Whisker Plot from Crab Trapping on Pier 1 Beach

McNeil Canyon 6th graders analyzed helmet crab size data from 2012-2015. The class found that there is not one age class getting larger each year. They concluded that there are probably many variables that influence why and when helmet crab move on and off of Pier One Beach. The size seen most often over the last four years is 45-50mm (~2 inches).



Kachemak Bay National Estuarine Research Reserve  
Alaska Center for Conservation Science  
UNIVERSITY of ALASKA ANCHORAGE

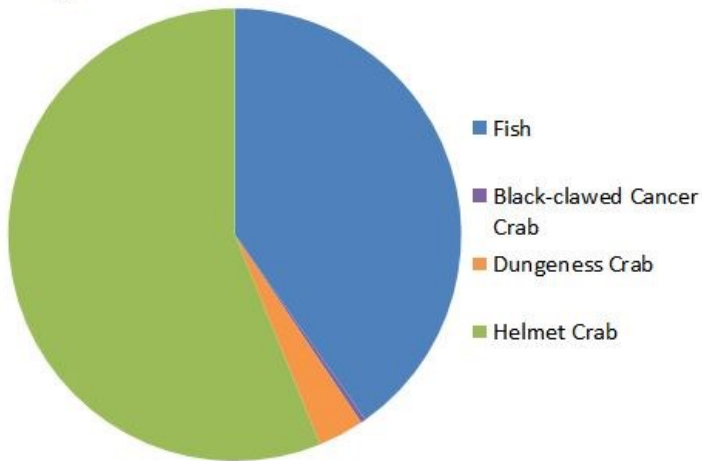


# KACHEMAK BAY RESEARCH RESERVE

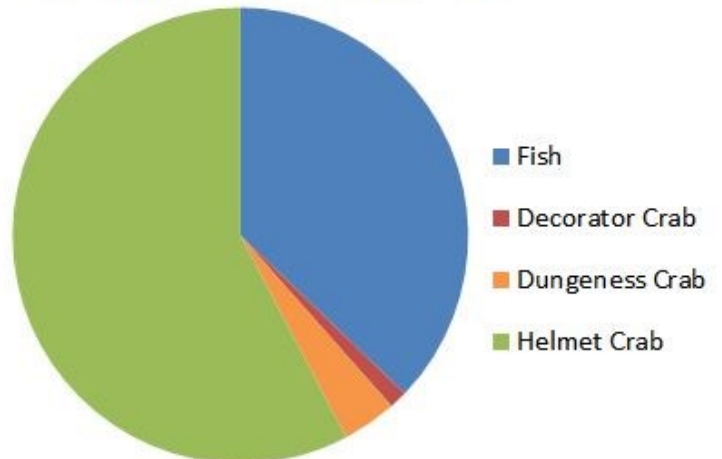
## European Green Crab Monitoring

### 2016 Progress Report

Bycatch from Pier 1 2016



Bycatch from Seldovia 2016



#### Bycatch from Trapping for European Green Crabs

The pie graphs on this page compare the bycatch from the traps set this year at the Homer Spit, (Pier 1 Beach) and Seldovia, (near the harbor). We consider anything that is caught in the traps that is not a European Green Crab, (our target species) to be bycatch. We were actually surprised at the similarity of organisms between these two areas. The two sites are about 20 miles apart. Seldovia ocean water is a bit colder and saltier than inside the Homer spit in the summer. It looks like that doesn't affect species composition much in this particular case.

**We are recruiting trapping volunteers from these areas:**  
**Bear Cove, Head of Kachemak Bay, N. Side of Kachemak Bay.**

For more information contact Catie Bursch  
or Rosie Robinson at 907-235-4797  
cmbursch@alaska.edu  
rmrobinson3@alaska.edu



Braeden Porter is organized and ready to deploy traps at Sunshine Pt.



Kachemak Bay National Estuarine Research Reserve  
Alaska Center for Conservation Science  
UNIVERSITY of ALASKA ANCHORAGE

