



KBRR Herring Island Tunicate Survey

Catie Bursch- May 19, 2015

Location: Western tip of largest of the herring Islands, see map below.

Surveyors: KBRR-Angela Doroff, Stacey Buckelew and Catie Bursch and NOAA-Dominic Hondolero

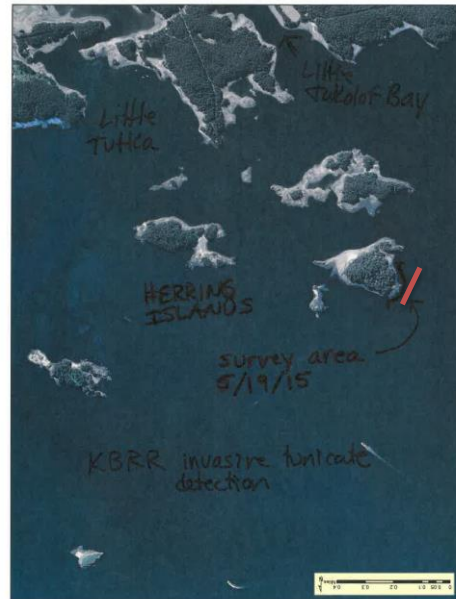
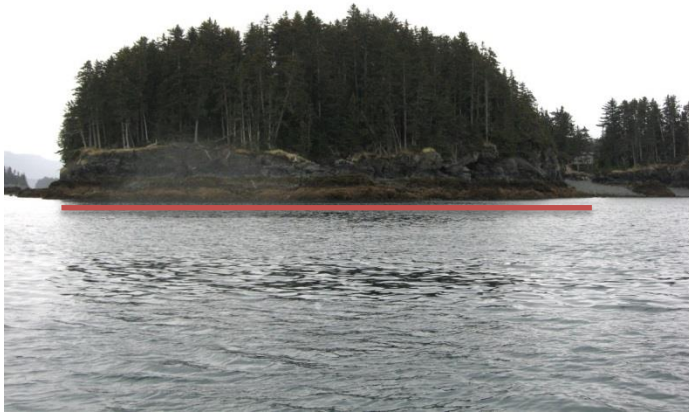
We walked along the low tide line and just below the mid-tide line inspecting the beach for ~ 2 hours.

Salinity: 28.8 ppt Temp: 6.7 C Tide: -4.7

Eastern end of survey: 59 29.096N 151 31.365W

Western end of survey: 59 28 59.81N 151 31 23.35W

Settling plate was deployed near eastern end of survey in tunnel created by two large boulders leaning against one another.



Red line indicates where we surveyed.

Basically just east of point of rocks to first western beach.



Looking west from survey spot.



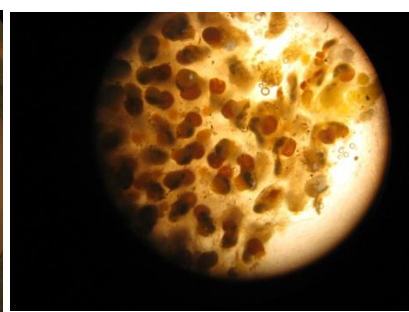
Looking east from survey spot.



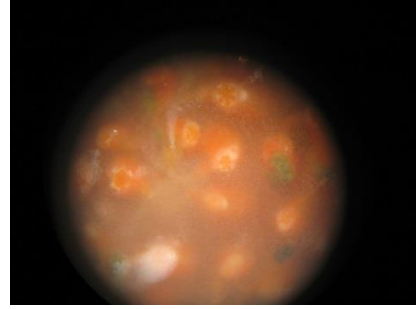
Habitat at -4.7 tide. Very exposed high-energy beach. Lots of coralline algae and barnacles.

Tunicates were hard to find. We found 4 tunicates total, labeled Samples 30-32.

Sample #30:



Sample #31:



Sample #32:



At first glance these tunicates do not resemble the *Botrylloides violaceus* I have seen, but they have not been formally identified yet and are preserved in both ethyl and 10% seawater formalin at KBRR in Homer, AK.